

DELC DRAINS

DELC SLOT DRAIN SD SERIES SPECIFICATION SHEET

GENERAL:

The drainage system shall be DELC Slot Drain, SD Series. DELC Slot Drains feature a fully welded, internally sloped, and CFIA/USDA approved design. These drains are sanitary, corrosive resistant, and load rated for heavy equipment use.

SLOPE:

1.5% Standard
*Custom Slopes Available

MATERIALS:

T304 Stainless Steel or T316 Stainless Steel

OPTIONAL ITEMS:

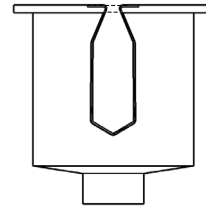
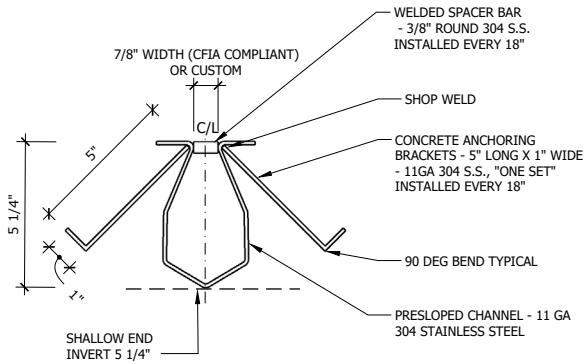
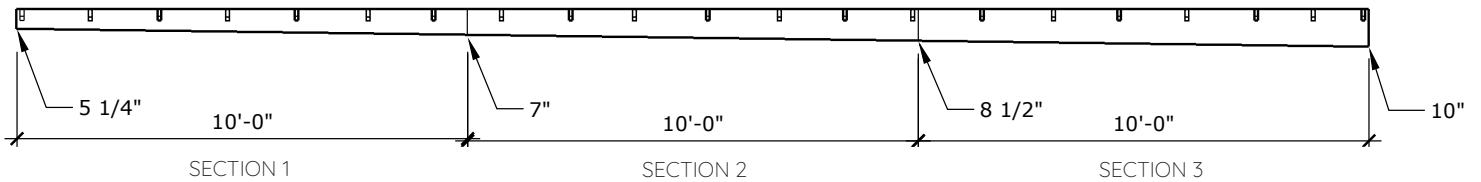
TCC Tri Clamp Connections
FM Flow Maintainer

LOAD CLASS:

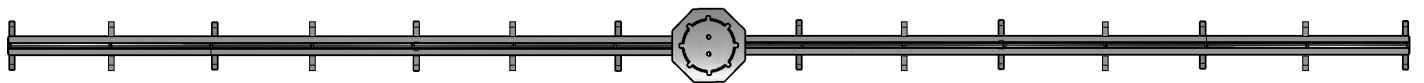
Load Class E - Forklift Rated

INSTALLATION:

The DELC Slot Drain shall be installed in accordance with the manufacturer's installation instructions and recommendations.



SLOT DRAIN FIT AND WELDED TO
FD-12000 SERIES FLOOR DRAIN



ADDITIONAL INFO

Typical sections are built in 10' lengths at 1.5% internal slope up to 50' or 5 Sections. Customized designs are available